



## Connections for the HDMI-ST

The High Definition Multimedia Interface [HDMI] supplies both high-definition video and multi channel digital audio. It is an ALL DIGITAL interface with NO Analogue signals. HDMI is backward compatible with the DVI interface, but without the more advanced upgrades and no audio.

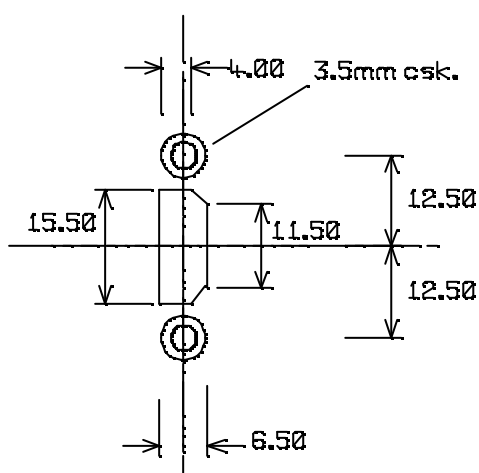
### ***Using the adapter***

When terminating cables onto the connector they should ALL be cut to the same length, DON'T shorten some for neatness.

The cable consists of a number of individual screen pairs normally contained with different coloured foil. The foil should be trimmed back, the drain wire should be sleeved in green ( insulation stripped from 7/0.2 equipment wire is ideal) and then the end of the foil sleeved to stop the foil unravelling further. Keep these pairs twisted to the same extent as they are in the cable, don't be tempted to twist tighter. Try and maintain the twist as near as possible to the screw terminals.

Most cable manufacturers tend to use similar colours for the mains data but do vary on the other cores. Over the page the table gives typical pin outs but you should verify these for the cable you are using.

### ***Panel Cutout***



It is the same panel cutout for all Ikon HDMI adapters.

When using the HDMI-90BB the cable is to the left as viewed

HDMI Pin No.	HDMI Signal	TDI		Pro-Signal		IKON HDMI-26		DVI-D Signal	DVI-D Pin NO.
1	TMDS Data 2+	Blue	Silver Foil	Blue	Silver Foil	Red	Gold Foil #1	TMDS Data 2+	2
2	TMDS Data 2 Shield	Drain		Drain		Drain		TMDS Data 2 Shield	3
3	TMDS Data 2-	White		White		White		TMDS Data 2-	1
4	TMDS Data 1+	Blue	Blue Foil	Blue	Blue Foil	Blue	Gold Foil #2	TMDS Data 1+	10
5	TMDS Data 1 Shield	Drain		Drain		Drain		TMDS Data 1 Shield	11
6	TMDS Data 1-	White		White		White		TMDS Data 1-	9
7	TMDS Data 0+	Blue	Green Foil	Blue	Green Foil	Green	Gold Foil #3	TMDS Data 0+	18
8	TMDS Data 0 Shield	Drain		Drain		Drain		TMDS Data 0 Shield	19
9	TMDS Data 0-	White		White		White		TMDS Data 0-	17
10	TMDS Clock+	Blue	Yellow Foil	Blue	Yellow Foil	Brown	Gold Foil #4	TMDS Clock+	23
11	TMDS Clock Shield	Drain		Drain		Drain		TMDS Clock Shield	22
12	TMDS Clock-	White		White		White		TMDS Clock-	24
13	CEC	Green		Green		Grey			
14	Not Used	-		-		Violet		Not Used	8
15	DDC Clock	Gold		Orange	or Pale Orange	Orange		DDC Clock	6
16	DDC Data	Violet		Violet		Yellow		DDC Data	7
17	Ground	Pink		White		Pink		Ground	15
18	+5V Power	Red		Red	or Orange	Red		+5V Power	14
19	Hot Plug Detect	Yellow		Yellow		White		Hot Plug Detect	16
20	SHELL	Screen		Screen		Screen			
								TMDS Data 3+	13
								TMDS Data 3 Shield	11
								TMDS Data 3-	12
								TMDS Data 4+	5
								TMDS Data 4 Shield	3
								TMDS Data 4-	4
								TMDS Data 5+	21
								TMDS Data 5 Shield	19
								TMDS Data 5-	20